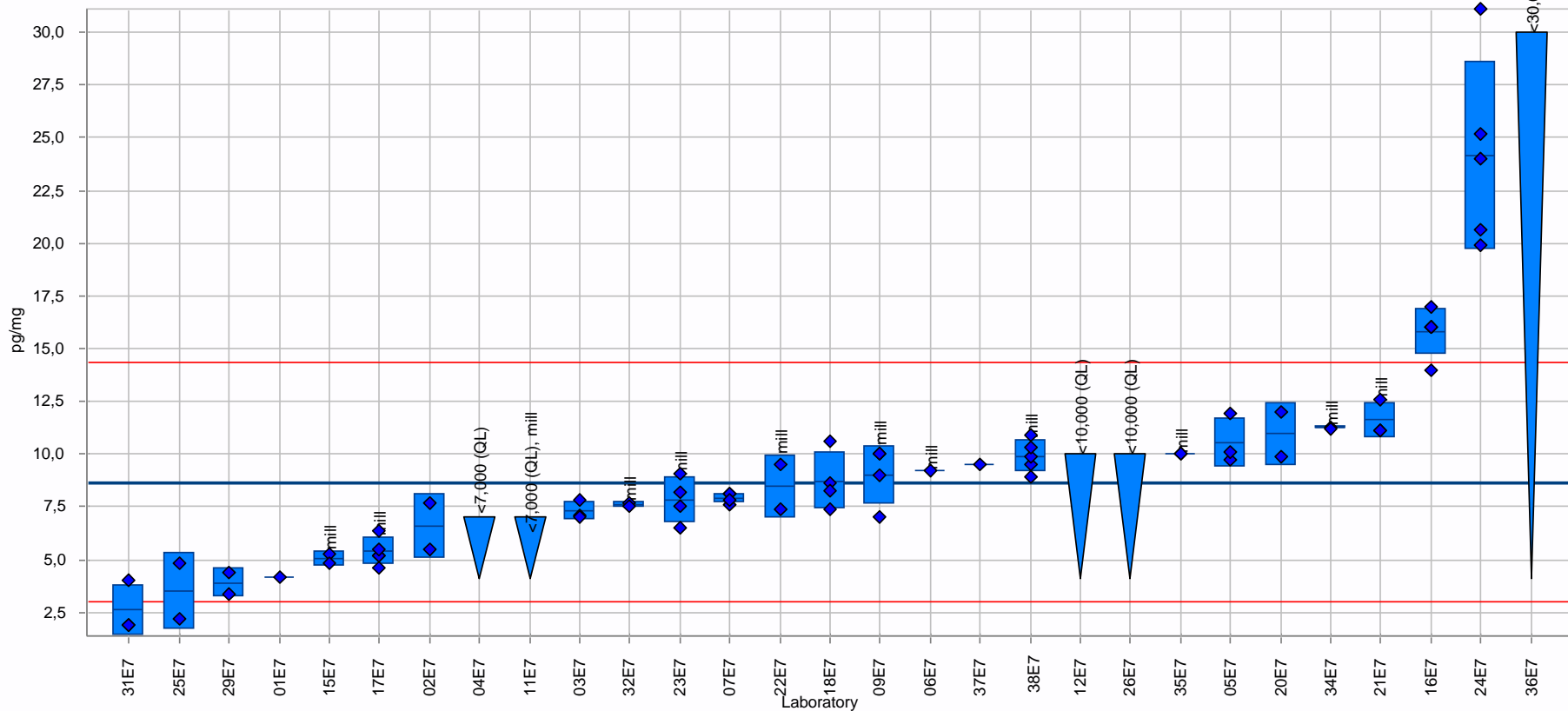


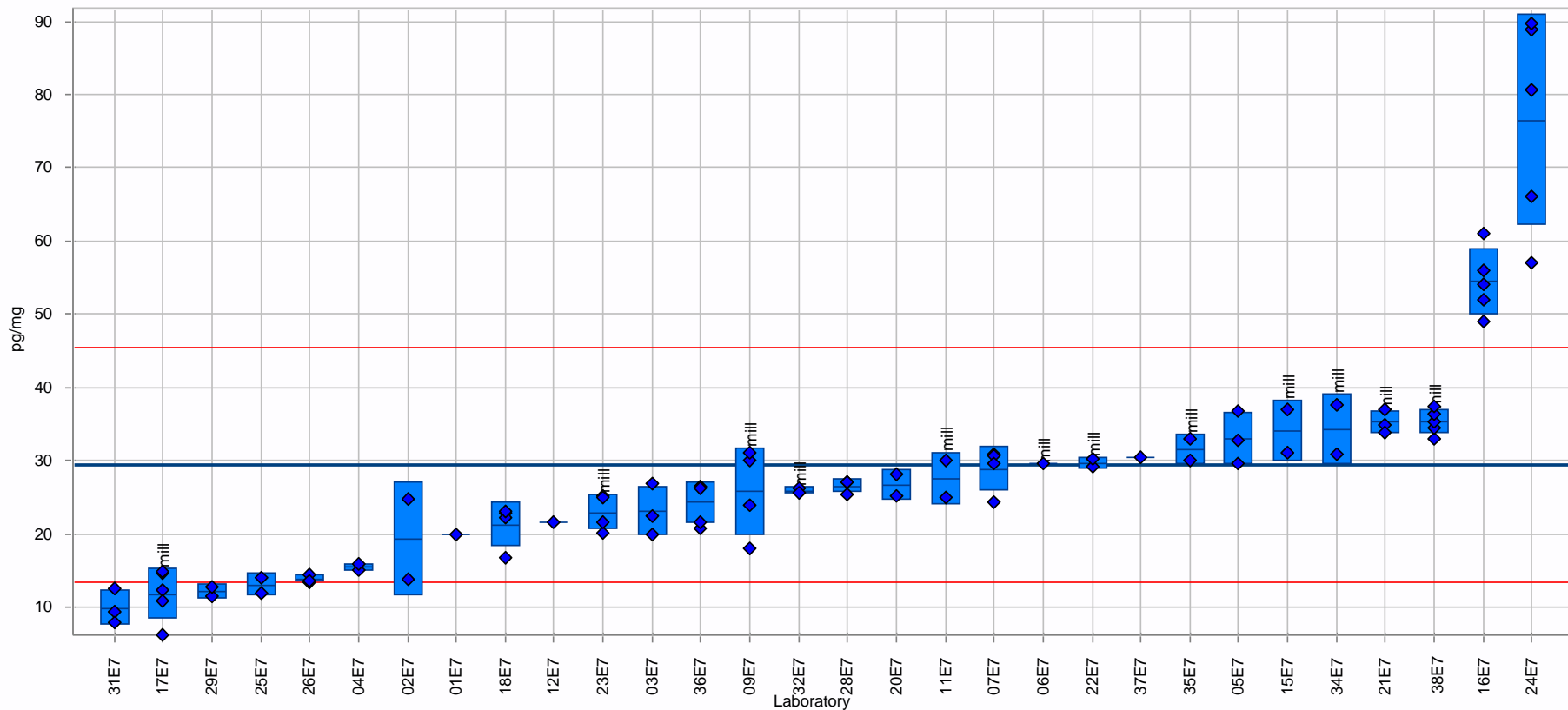
Sample: EtG_A
 Measurand: EtG
 Statistical method: ISO 5725-5
 No. of laboratories: 24
 No. of measurement values: 69

Assigned value: 8,662 pg/mg (Reference value)
 Target s.d.: 2,832 pg/mg (Horwitz function)
 Rel. target s.d.: 32,69%
 Range of tolerance: 2,999 - 14,325 pg/mg ($|Z\text{-Score}| \leq 2,000$)



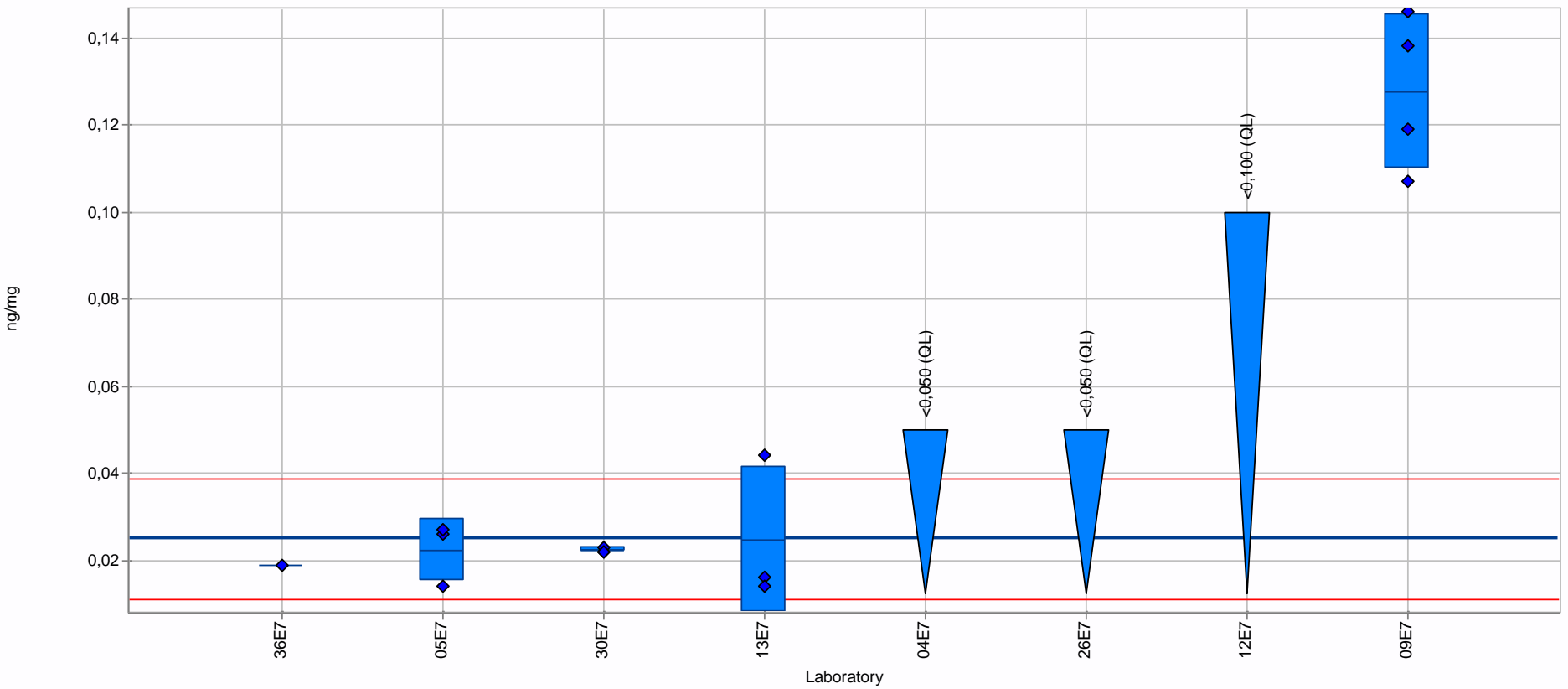
Sample: EtG_B
Measurand: EtG
Statistical method: ISO 5725-5
No. of laboratories: 30
No. of measurement values: 85

Assigned value: 29,404 pg/mg (Reference value)
Target s.d.: 7,997 pg/mg (Horwitz function)
Rel. target s.d.: 27.20%
Range of tolerance: 13,409 - 45,399 pg/mg ($|Z\text{-Score}| \leq 2,000$)



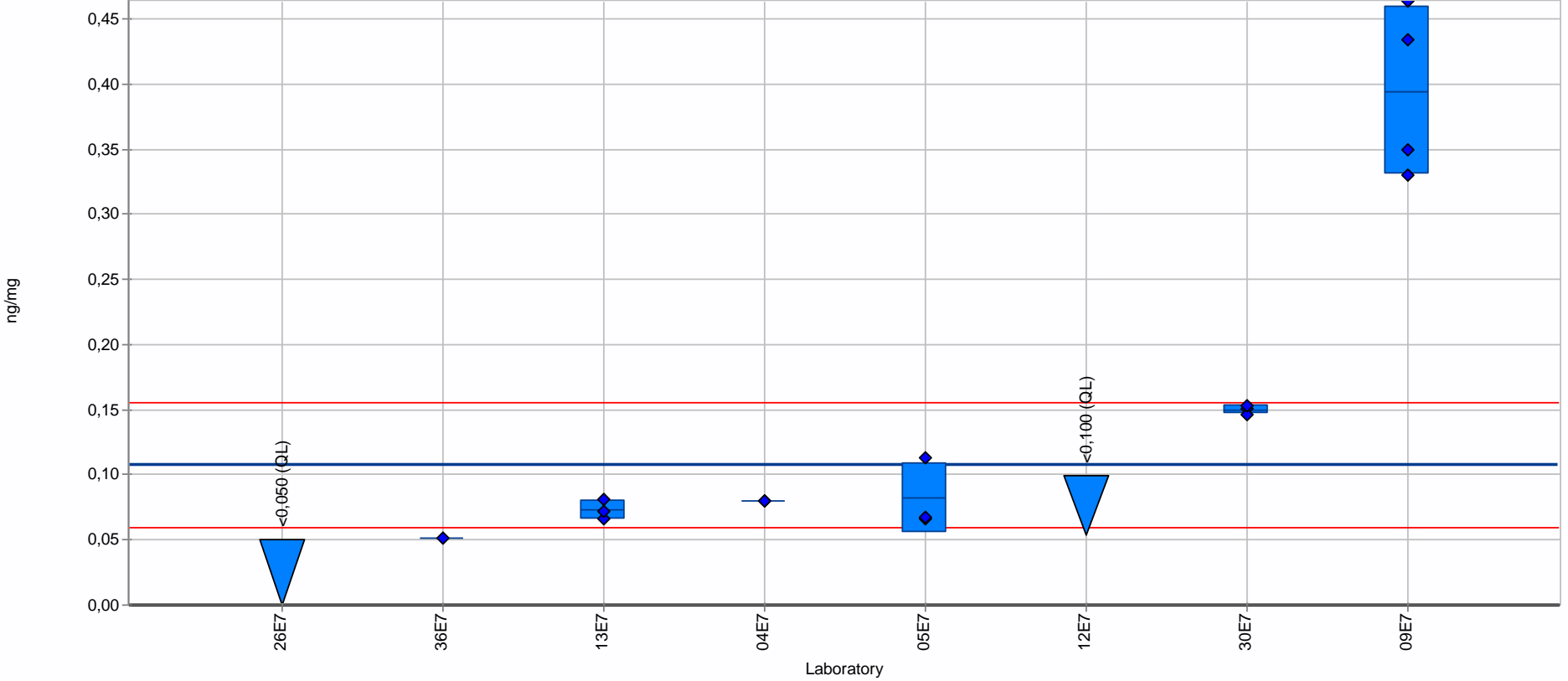
Sample: Sample_A_not_washed
Measurand: Myristic acid ethyl ester
Statistical method: ISO 5725-5 (Alg. A+S)
No. of laboratories: 5
No. of measurement values: 14

Assigned value: 0,025 ng/ mg (Empirical value)
Target s.d.: 0,007 ng/ mg (Horwitz function)
Rel. target s.d.: 27,89%
Range of tolerance: 0,011 - 0,039 ng/ mg ($|Z\text{-Score}| \leq 2,000$)



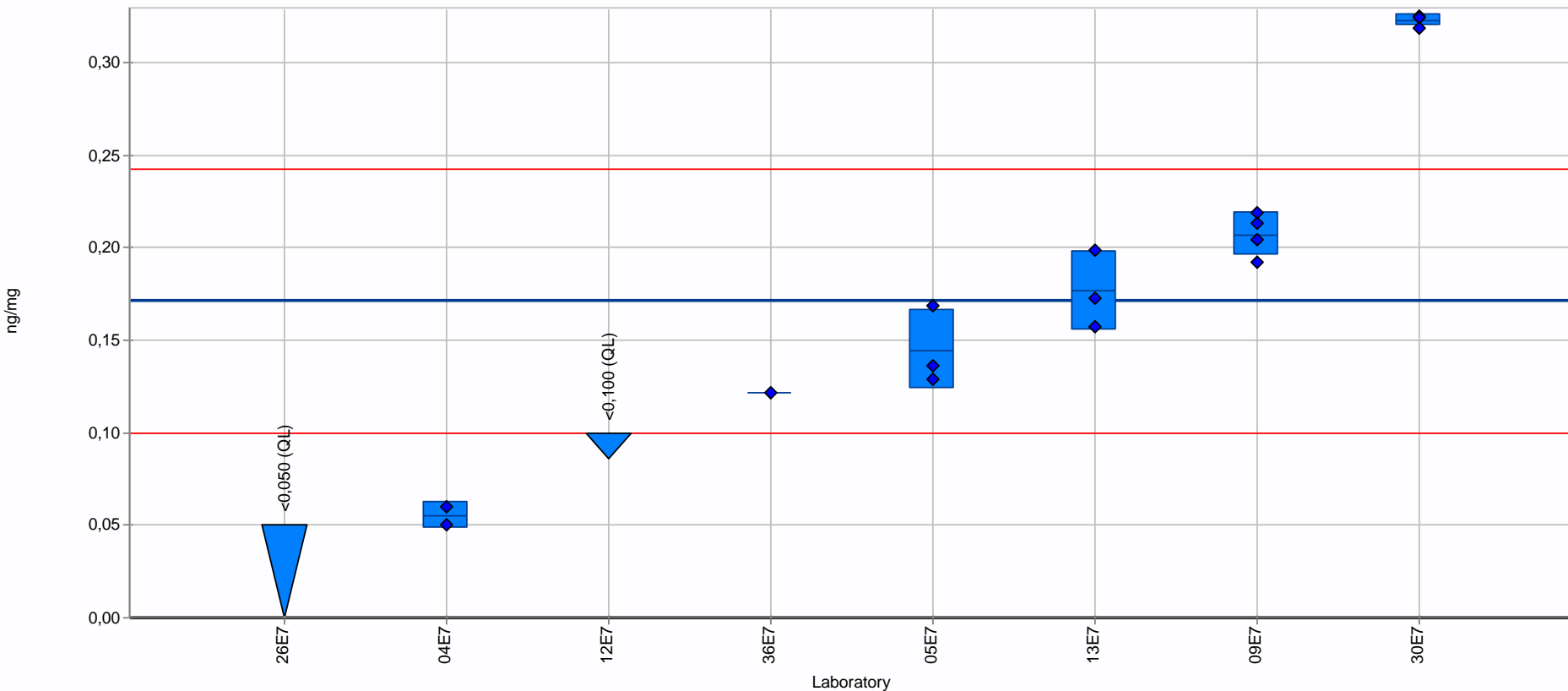
Sample: Sample_A_not_washed
Measurand: Palmitic acid ethyl ester
Statistical method: ISO 5725-5 (Alg. A+S)
No. of laboratories: 6
No. of measurement values: 16

Assigned value: 0,108 ng/ mg (Empirical value)
Target s.d.: 0,024 ng/ mg (Horwitz function)
Rel. target s.d.: 22,37%
Range of tolerance: 0,060 - 0,156 ng/ mg ($|Z\text{-Score}| \leq 2,000$)



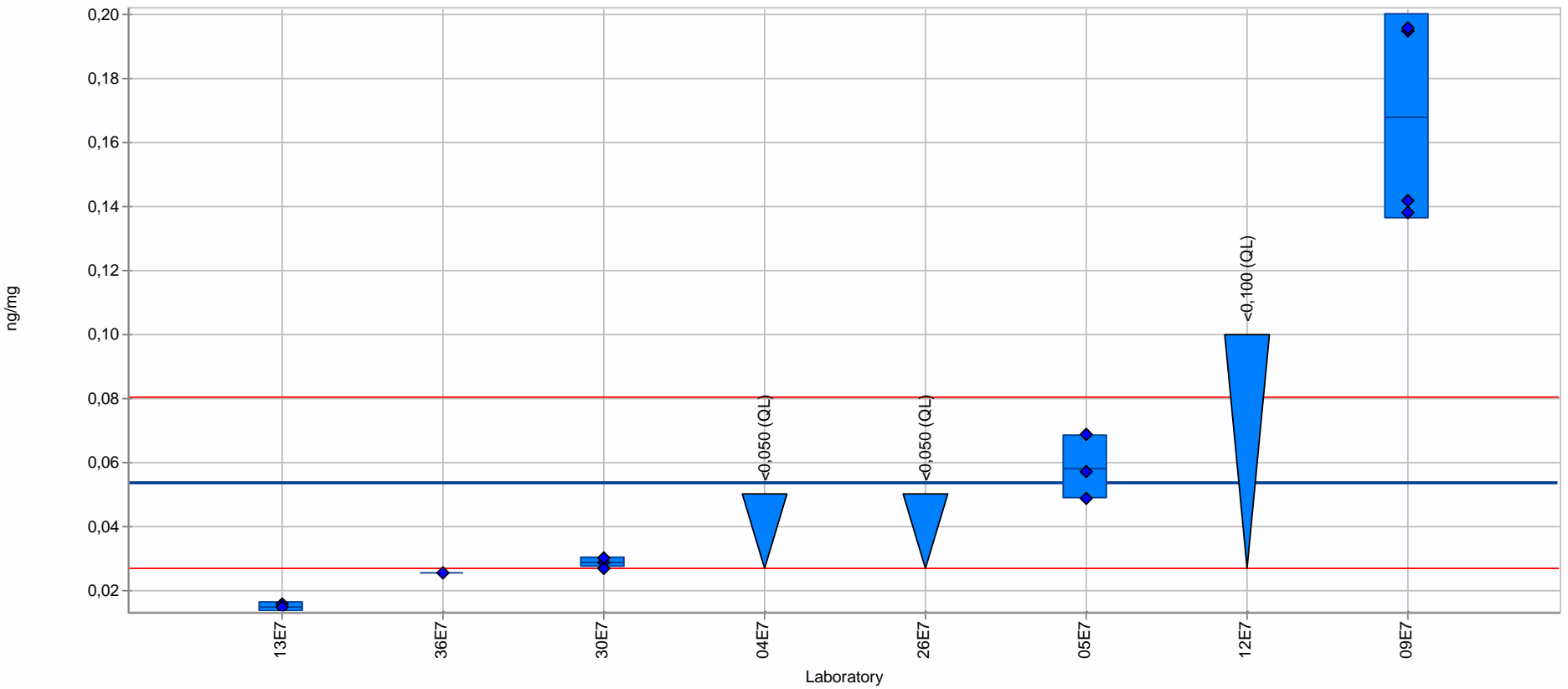
Sample: Sample_A_not_washed
Measurand: Oleic acid ethyl ester
Statistical method: ISO 5725-5 (Alg. A+S)
No. of laboratories: 6
No. of measurement values: 16

Assigned value: 0,171 ng/mg (Empirical value)
Target s.d.: 0,036 ng/mg (Horwitz function)
Rel. target s.d.: 20,86%
Range of tolerance: 0,100 - 0,243 ng/mg ($|Z\text{-Score}| \leq 2,000$)



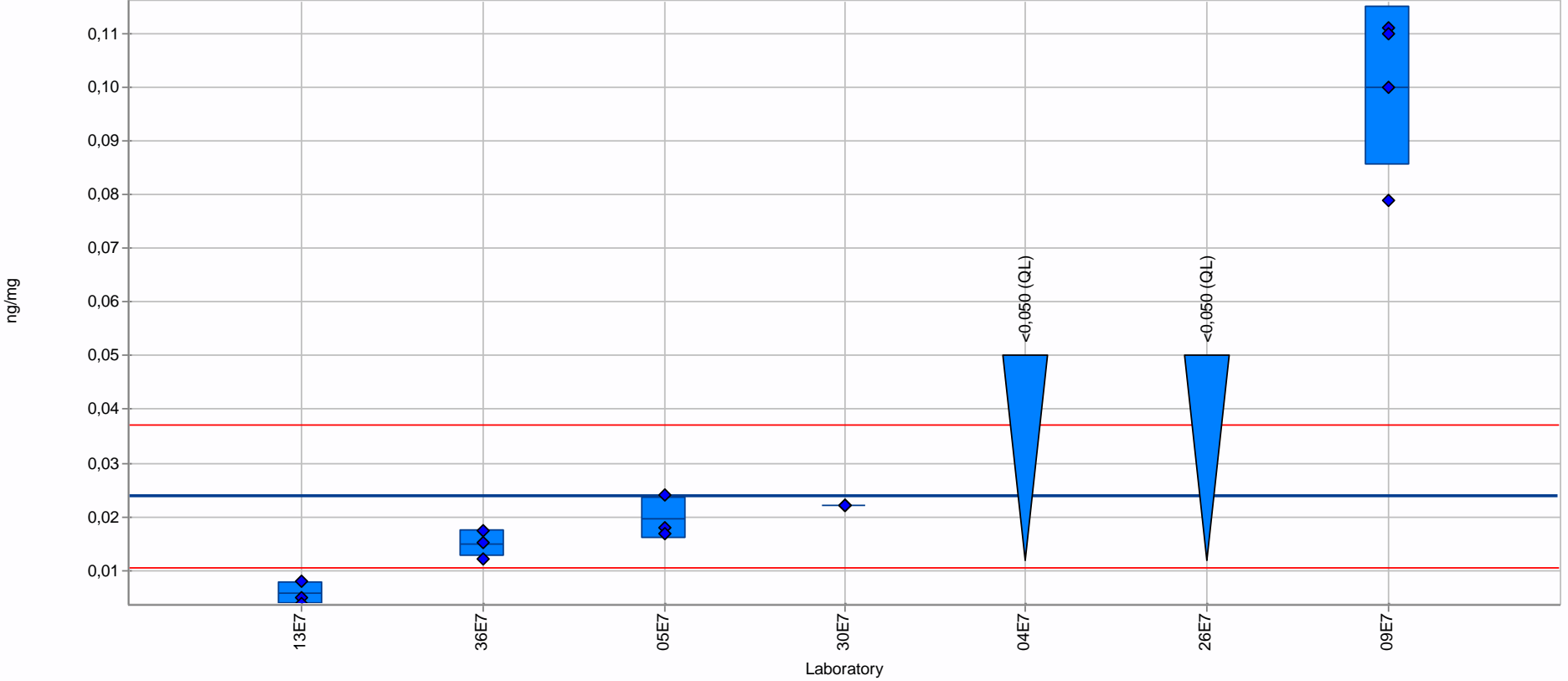
Sample: Sample_A_not_washed
Measurand: Stearic acid ethyl ester
Statistical method: ISO 5725-5 (Alg. A+S)
No. of laboratories: 5
No. of measurement values: 14

Assigned value: 0,054 ng/ mg (Empirical value)
Target s.d.: 0,013 ng/ mg (Horwitz function)
Rel. target s.d.: 24,85%
Range of tolerance: 0,027 - 0,080 ng/ mg ($|Z\text{-Score}| \leq 2,000$)



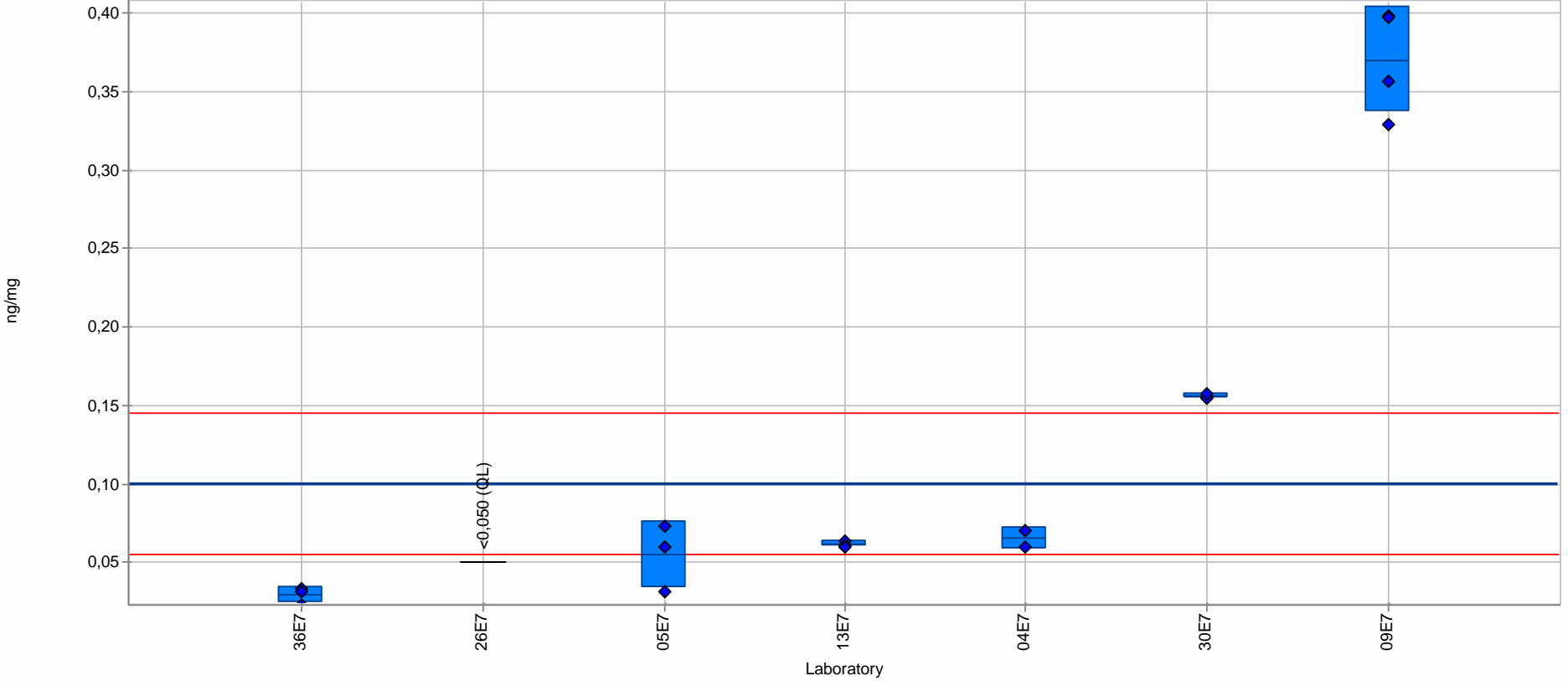
Sample: Sample_A_washed
Measurand: Myristic acid ethyl ester
Statistical method: ISO 5725-5 (Alg. A+S)
No. of laboratories: 5
No. of measurement values: 16

Assigned value: 0,024 ng/ mg (Empirical value)
Target s.d.: 0,007 ng/ mg (Horwitz function)
Rel. target s.d.: 28,08%
Range of tolerance: 0,010 - 0,037 ng/ mg ($|Z\text{-Score}| \leq 2,000$)



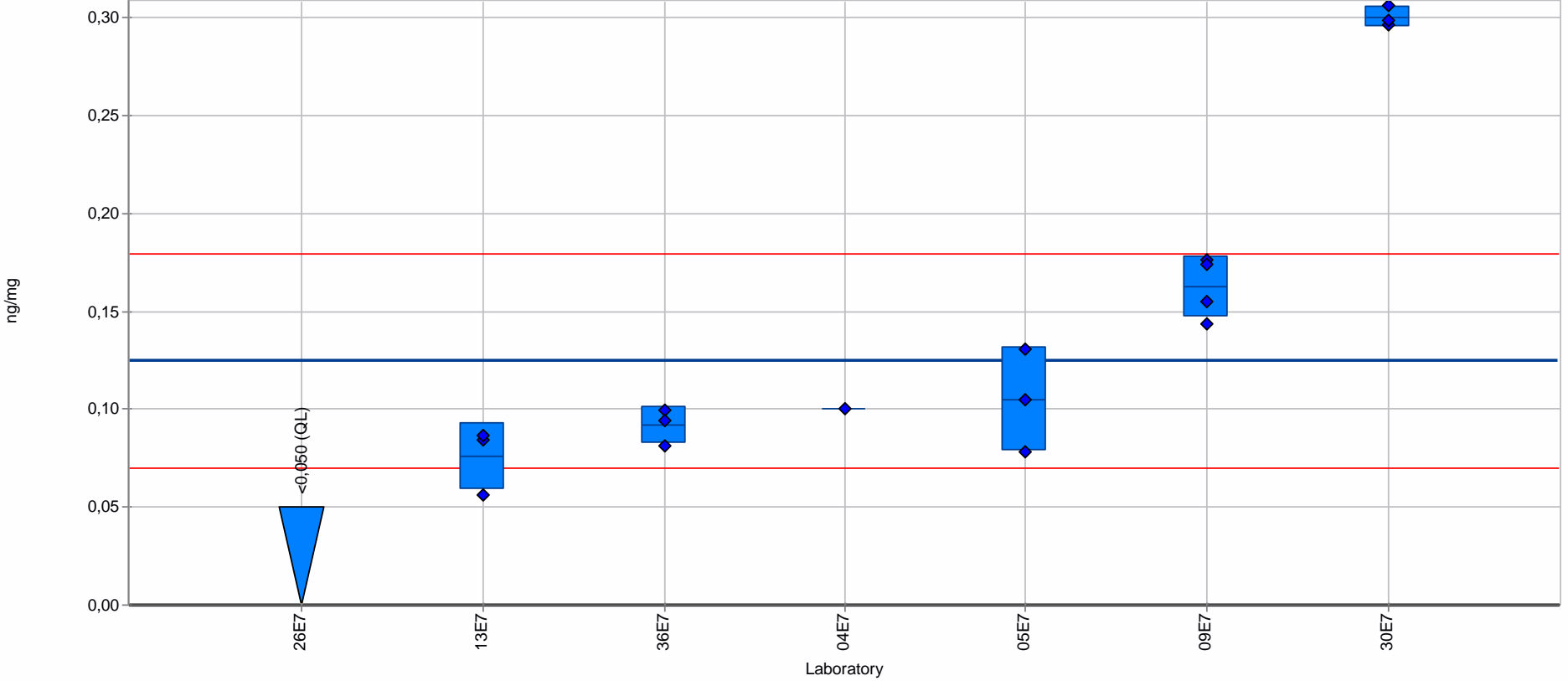
Sample: Sample_A_washed
Measurand: Palmitic acid ethyl ester
Statistical method: ISO 5725-5 (Alg. A+S)
No. of laboratories: 6
No. of measurement values: 18

Assigned value: 0,100 ng/ mg (Empirical value)
Target s.d.: 0,023 ng/ mg (Horwitz function)
Rel. target s.d.: 22,63%
Range of tolerance: 0,055 - 0,145 ng/ mg ($|Z\text{-Score}| \leq 2,000$)



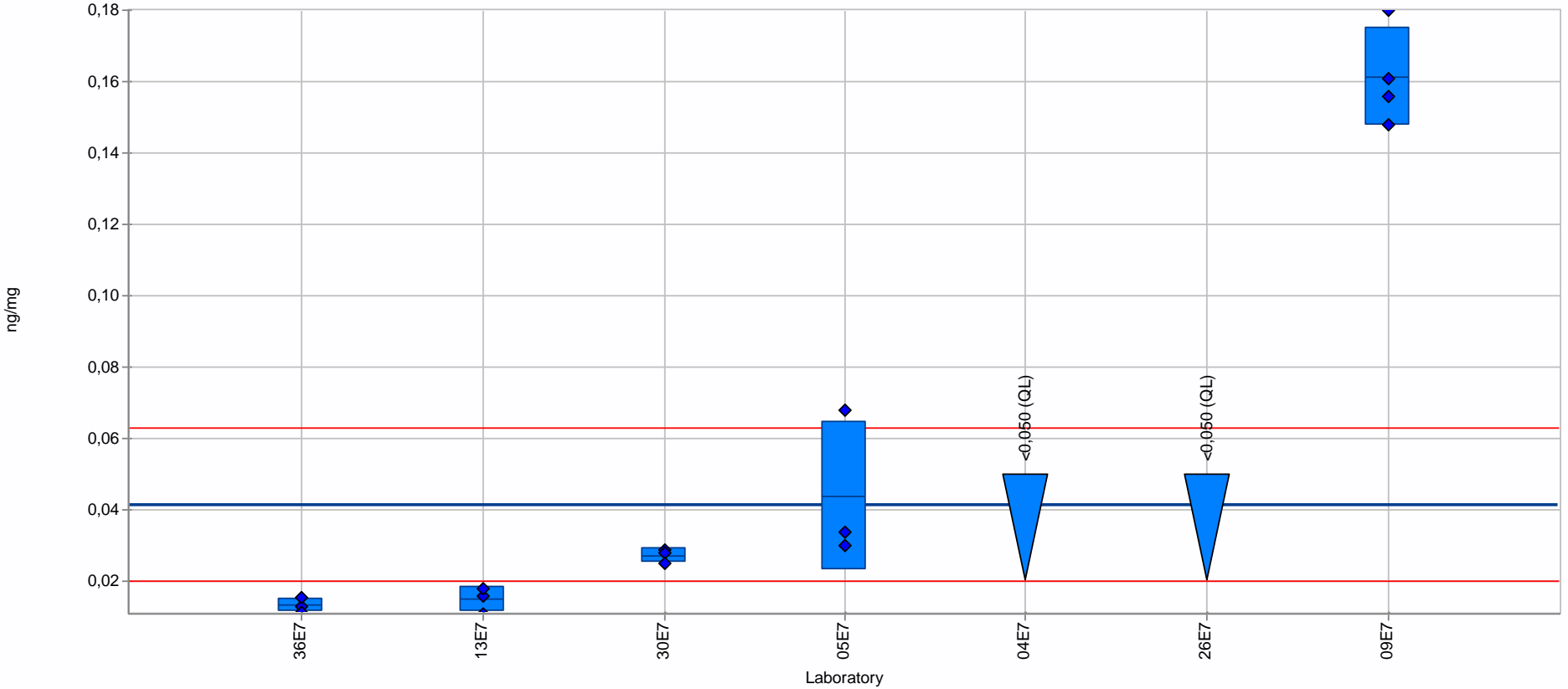
Sample: Sample_A_washed
Measurand: Oleic acid ethyl ester
Statistical method: ISO 5725-5 (Alg. A+S)
No. of laboratories: 6
No. of measurement values: 17

Assigned value: 0,125 ng/ mg (Empirical value)
Target s.d.: 0,027 ng/ mg (Horwitz function)
Rel. target s.d.: 21,88%
Range of tolerance: 0,070 - 0,180 ng/ mg ($|Z\text{-Score}| \leq 2,000$)



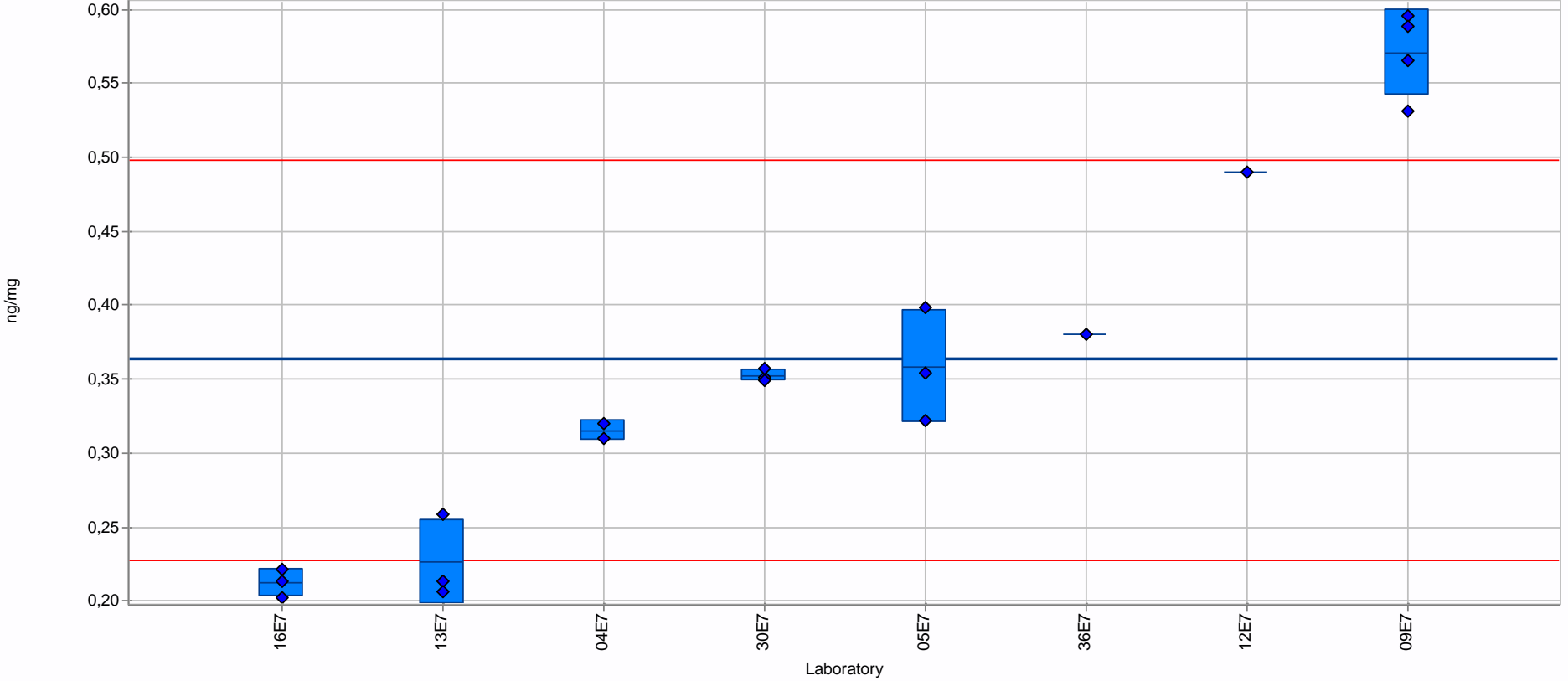
Sample: Sample_A_washed
Measurand: Stearic acid ethyl ester
Statistical method: ISO 5725-5 (Alg. A+S)
No. of laboratories: 5
No. of measurement values: 16

Assigned value: 0,042 ng/ mg (Empirical value)
Target s.d.: 0,011 ng/ mg (Horwitz function)
Rel. target s.d.: 25,82%
Range of tolerance: 0,020 - 0,063 ng/ mg ($|Z\text{-Score}| \leq 2,000$)



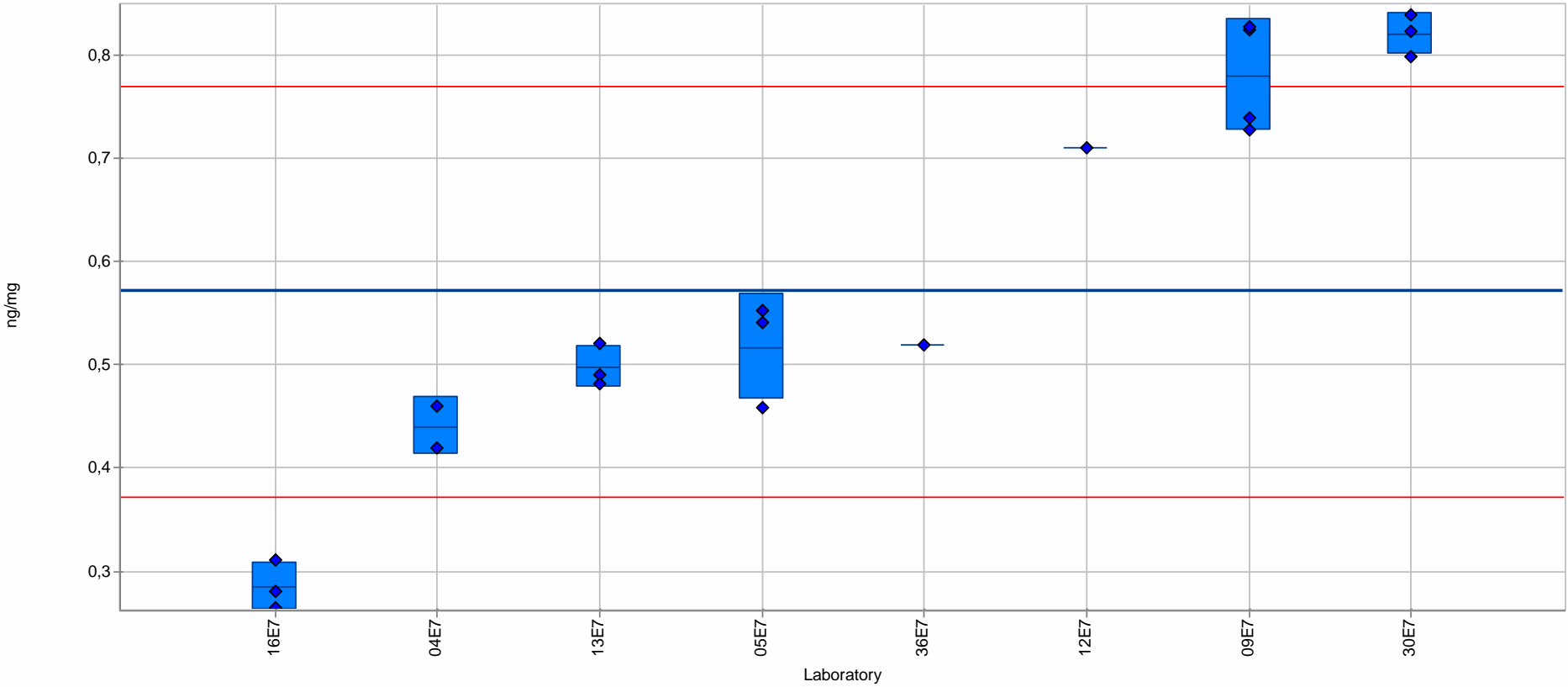
Sample: Sample_B_not_washed
Measurand: Myristic acid ethyl ester
Statistical method: ISO 5725-5 (Alg. A+S)
No. of laboratories: 8
No. of measurement values: 20

Assigned value: 0,363 ng/ mg (Empirical value)
Target s.d.: 0,068 ng/ mg (Horwitz function)
Rel. target s.d.: 18,63%
Range of tolerance: 0,228 - 0,498 ng/ mg ($|Z\text{-Score}| \leq 2,000$)



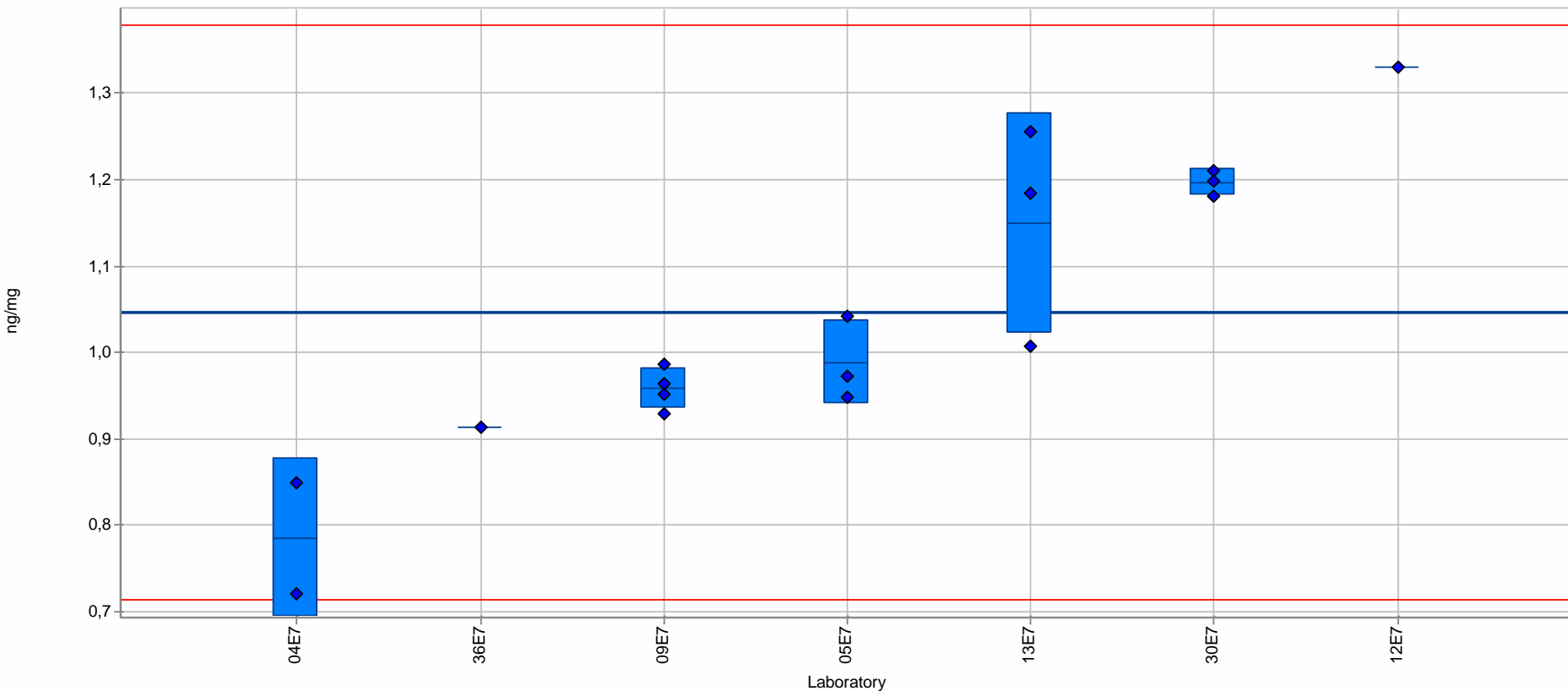
Sample: Sample_B_not_washed
Measurand: Palmitic acid ethyl ester
Statistical method: ISO 5725-5 (Alg. A+S)
No. of laboratories: 8
No. of measurement values: 20

Assigned value: 0,571 ng/mg (Empirical value)
Target s.d.: 0,099 ng/mg (Horwitz function)
Rel. target s.d.: 17,40%
Range of tolerance: 0,372 - 0,770 ng/mg ($|Z\text{-Score}| \leq 2,000$)



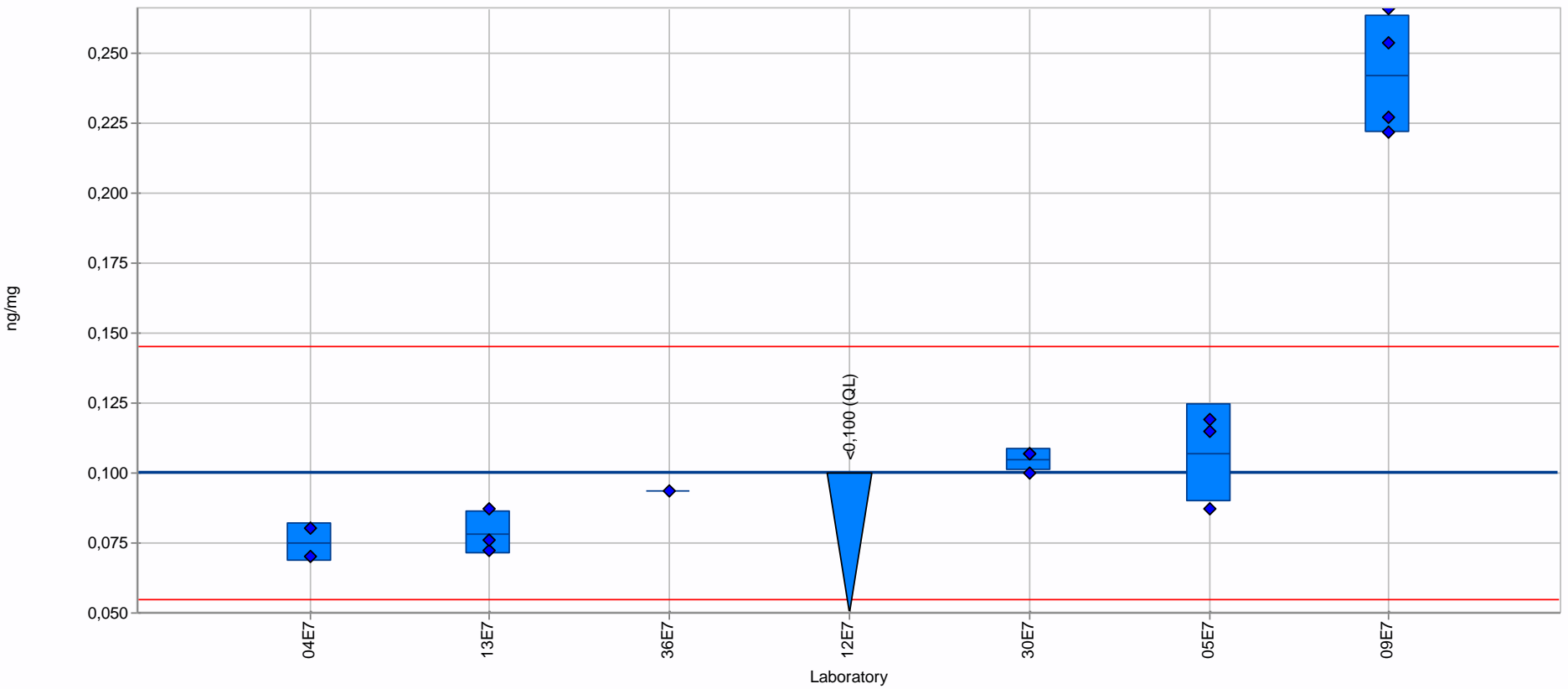
Sample: Sample_B_not_washed
Measurand: Oleic acid ethyl ester
Statistical method: ISO 5725-5 (Alg. A+S)
No. of laboratories: 7
No. of measurement values: 17

Assigned value: 1,046 ng/ mg (Empirical value)
Target s.d.: 0,166 ng/ mg (Horwitz function)
Rel. target s.d.: 15,89%
Range of tolerance: 0,713 - 1,378 ng/ mg ($|Z\text{-Score}| \leq 2,000$)



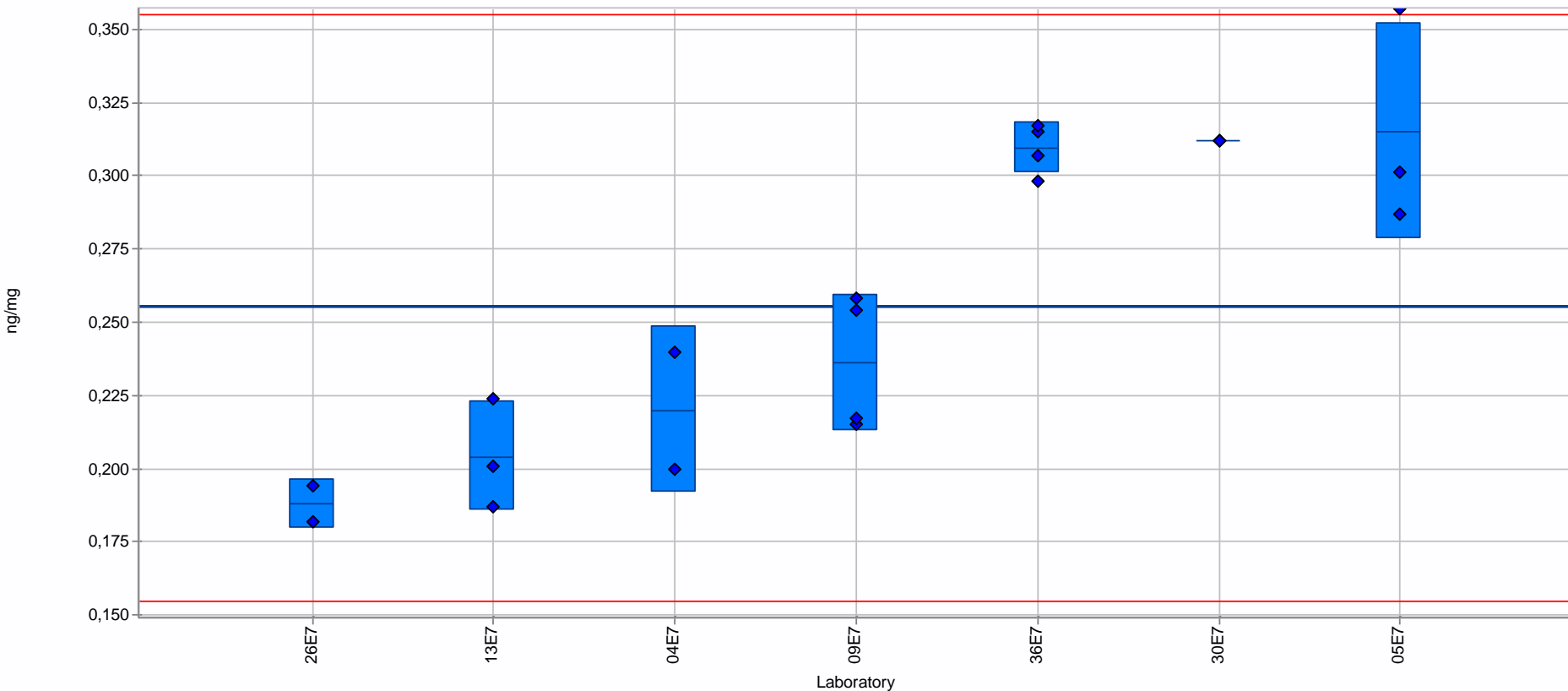
Sample: Sample_B_not_washed
Measurand: Stearic acid ethyl ester
Statistical method: ISO 5725-5 (Alg. A+S)
No. of laboratories: 6
No. of measurement values: 16

Assigned value: 0,100 ng/ mg (Empirical value)
Target s.d.: 0,023 ng/ mg (Horwitz function)
Rel. target s.d.: 22,63%
Range of tolerance: 0,055 - 0,145 ng/ mg ($|Z\text{-Score}| \leq 2,000$)



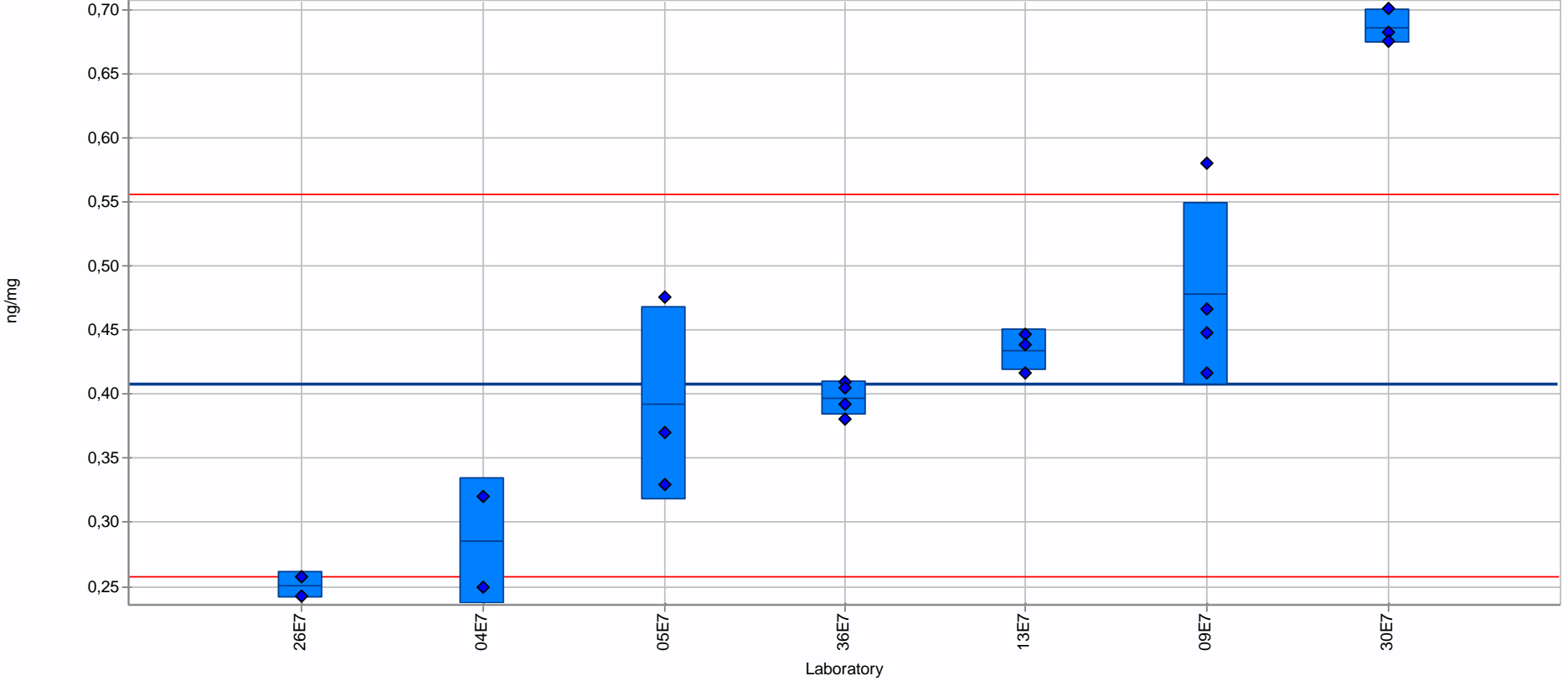
Sample: Sample_B_washed
Measurand: Myristic acid ethyl ester
Statistical method: ISO 5725-5 (Alg. A+S)
No. of laboratories: 7
No. of measurement values: 21

Assigned value: 0,255 ng/ mg (Empirical value)
Target s.d.: 0,050 ng/ mg (Horwitz function)
Rel. target s.d.: 19,65%
Range of tolerance: 0,155 - 0,355 ng/ mg ($|Z\text{-Score}| \leq 2,000$)



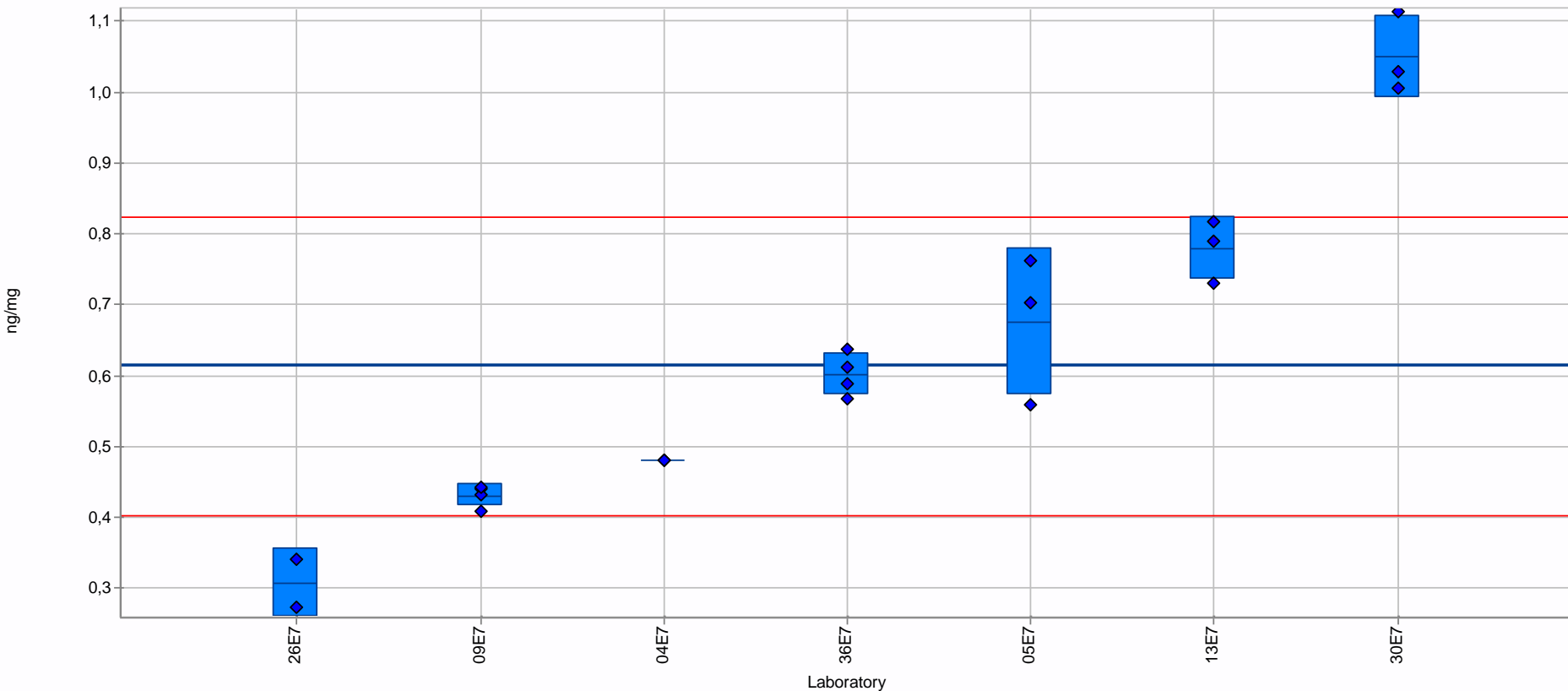
Sample: Sample_B_washed
Measurand: Palmitic acid ethyl ester
Statistical method: ISO 5725-5 (Alg. A+S)
No. of laboratories: 7
No. of measurement values: 21

Assigned value: 0,407 ng/ mg (Empirical value)
Target s.d.: 0,075 ng/ mg (Horwitz function)
Rel. target s.d.: 18,32%
Range of tolerance: 0,258 - 0,556 ng/ mg ($|Z\text{-Score}| \leq 2,000$)



Sample: Sample_B_washed
Measurand: Oleic acid ethyl ester
Statistical method: ISO 5725-5 (Alg. A+S)
No. of laboratories: 7
No. of measurement values: 21

Assigned value: 0,613 ng/ mg (Empirical value)
Target s.d.: 0,106 ng/ mg (Horwitz function)
Rel. target s.d.: 17,22%
Range of tolerance: 0,402 - 0,824 ng/ mg ($|Z\text{-Score}| \leq 2,000$)



Sample: Sample_B_washed
Measurand: Stearic acid ethyl ester
Statistical method: ISO 5725-5 (Alg. A+S)
No. of laboratories: 6
No. of measurement values: 19

Assigned value: 0,070 ng/ mg (Empirical value)
Target s.d.: 0,017 ng/ mg (Horwitz function)
Rel. target s.d.: 23,88%
Range of tolerance: 0,036 - 0,103 ng/ mg ($|Z\text{-Score}| \leq 2,000$)

